

CONTINUOUS API MANUFACTURING FACILITY



Client:
CONFIDENTIAL



Value:
€30M



Location:
IRELAND



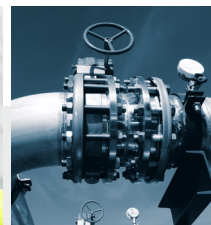
Duration:
24 MONTHS



BPE BIOPHARMA
ENGINEERING

NSC Campus, Mahon, Cork
T: +35321-230 7120 E: info@Biopharma.ie

Aisling Crowley, Client Relationship Manager
T: +353 21 2307145 M: +353 85 7441155 E:
acrowley@biopharma.ie



www.biopharmaengineering.com



CONTINUOUS API MANUFACTURING FACILITY

INTRODUCTION

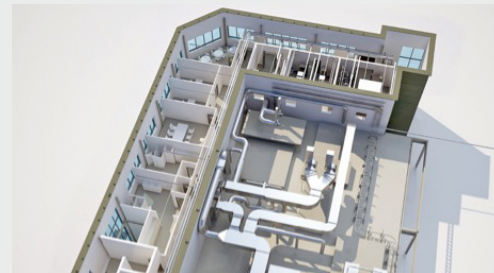
BPE were engaged by our client in 2015 for a conceptual study for an upgrade of their lab area to a continuous processing facility for multiple product.

The scope of the project was to demolish the existing PMO facility, extend the facility to provide infrastructure capable of supporting cGMP continuous processing for complete synthesis of a Small Molecule API with up to 4 manufacturing steps, plus subsequent crystallisation, drying and isolation of the final API.

Included in this scope was the attainment of planning permission, BCAR, Fire Cert, DAC, liaison with Fire for Fire protection requirement for ATEX and solvent manufacturing facility.

In addition to the manufacturing facility, the scope of project also covered new offices, changing rooms, and meeting rooms all within a very tight schedule to meet new product introduction deadlines.

The project met all of its major milestones with the facility in production in November 17.



PROJECT OVERVIEW

Two storey manufacturing building including areas for:

- Facility contains 11 pass through hoods
- Support equipment must be capable of supporting a 4 step process in the same campaign
- Finishing Suite for existing crystallisation and dry end equipment
- HPRA compliant facility.
- ATEX capable walk-in, pass through fume hoods and processing equipment in Processing and Hazardous Processing areas.
- Charging Room, Feed / Intermediate Room, Plant Rooms, E&I and Finishing Suite.
- HVAC and Airlocks to suit the facility.
- Utilities to support the process requirements.
- Solids Charge room and Intermediate / Feed room.
- Finishing Suite utilizing existing equipment sets from the site mobile equipment.
- Steam/ Condensate, Site Nitrogen, Secondary and Aqueous Waste, Heating and Cooling Skids, PWEC, Glycol, Potable Water, Scrubber, Vacuum Systems, WFO, Solvents, High Pressure Nitrogen and Hydrogen Gas Connections
- Drainage, Sprinklers and Required Damage Limiting Construction.

SERVICES

BPE have managed and delivered this project with overall BPE responsibility for the following:

- Scope Definition
- Conceptual Design Definition
- Front End & Detailed Design
- Overall Cost & project management
- Project PSDP & PSCS
- Process, Mechanical, Electrical, Instrumentation, Building Services., Construction Management & C&Q services.
- Full procurement services
- Completion of tender and award of all contracts
- Construction and Safety Management
- Vendor and Equipment Management
- Commissioning and Qualification execution